

FROM 1874 TO THE PRESENT...

Come and take a walk with us through time. The Museum is arranged in such a way that one can stroll down the board-walk and gaze into the shops and homes of early-day Meade County. From the sod house to the church and school, experience the lifestyle of the Western Kansas pioneer.



...RE-LIVE OUR PIONEER HERITAGE

An outdoor display located just north of the museum offers a close-up look at the Sunnydale one-room school house, a windmill and early day farm equipment.



ENJOY UNIQUE COLLECTIONS...

... such as our large saddle collection or our Rock Island Railroad collection.



Other Attractions

The Dalton Gang Hideout

502 S. Pearlette - Meade
620-873-2731
www.daltonhideout.com
www.daltonhideout@yahoo.com

The Widest Main Street in the USA in Plains, KS

Meade State Lake

13 miles south of Meade, KS
on Hwy K23
620-873-2572

Events

- Fowler Threshing Days the 3rd Saturday in July - Fowler, KS
- Dalton Hideout Chuckwagon Theater 2nd Saturday in August - Meade, KS
- Christmasing in Plains - 1st Saturday in December - Plains, KS

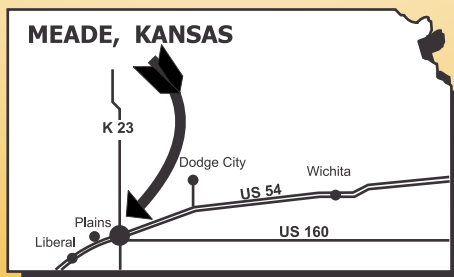
Meade County Historical Museum

TOURIST INFORMATION CENTER
(620) 873-2359

email: meademuseums@yahoo.com
200 E. Carthage • PO Box 893
Meade, Kansas 67864-0893

www.OldMeadeCounty.com

GROUP TOURS WELCOME



MEADE COUNTY HISTORICAL MUSEUM



Located 1 Block East of the Junction
of Hwys K-23 & US-54

MEADE, KANSAS

HOURS

OPEN YEAR-ROUND

10:00 - 5:00 Tuesday - Saturday

1:00 - 5:00 Sundays

(closed Mondays and major holidays)

FREE ADMISSION

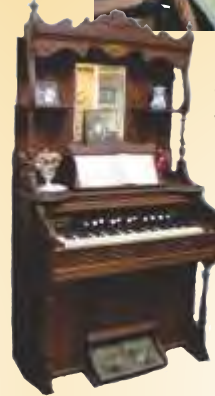


MEADE COUNTY HISTORICAL MUSEUM

Displays in the Meade County Historical Museum contain items donated by the people of Meade County for the preservation of history. These treasured items are displayed so that the visitor might feel as though he were there... in the sod house, attending school in a one-room school house, at the counter of the mercantile store, or watching the blacksmith shoe a horse.

Witness history come alive as you stroll down the board-walk by the train depot and gaze into the parlor or kitchen of an early-day home.

Visit the bank, photographer's studio and the Meade County jail.



The Livery Stable houses old-fashioned modes of transportation. The train depot contains a fascinating collection of railroad memorabilia. Hundreds of photos and informational displays tell the story of the ordinary citizen's travel through time.

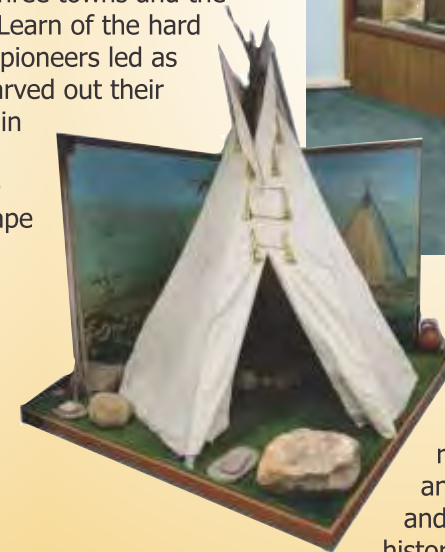
Re-live Meade County history starting with the Lone Tree Incident in 1874, when a government survey party of six, marking township lines, was ambushed by Cheyenne Indians. Then on through good times and bad... the coming of the railroad and the Great Depression and dust bowl days of the 1930's, the building of our three towns and the story of the ghost towns the railroad left behind. Learn of the hard



OPEN year-round and conveniently located on Hwy US-54 in downtown Meade, KS.



life our pioneers led as they carved out their legacy in this diverse landscape of the Great Plains.



Wherever your interests lie... be it paleontology, archeology, railroad, farming and ranching, law and order, or pioneer history, you will find

something of interest at the Meade County Historical Museum.

We have an excellent research Library with Meade County newspapers from 1886 on microfilm, obituaries and cemetery records for the entire County, as well as many family histories.

